

QUAIL HOLLOW

by  CHARLES SPUHLER INC.

HIGHLIGHTS OF YOUR SPUHLER HOME

- Ten-year HOW warranty
- Concrete driveway
- In-sink-erator garbage disposal
- Sodded front lawn
- State-of-the-art European cabinets
- Seeded side and back yards
- Stainless steel kitchen sink
- Gas range and oven
- Two-speed range hood
- Single-lever Moen faucets
- Whirlpool dishwasher
- Wall-to-wall carpeting
- Washer/dryer hookups
- Light oak stained trim
- One-car garage
- Public sewer and water
- Underground utilities
- Doorbell chime
- Concrete patio
- Cable TV to curb
- Brick/cedar exterior trim on certain models
- Professional landscaping
- Boxed fluorescent kitchen light
- Frost-free front and rear spigots
- Off-white, double-coated, Finnaren & Haley interior painted walls

Subject to errors, omissions and changes without notice

CONCERNED ABOUT ENERGY?

- Norandex aluminum frame windows
- Insulated steel front door
- Owens-Corning Fiberglas thermal crafting
- 9" ceiling R 30
- Full thick sidewall R 11
- Sheathing R 4
- Polyseal foam installed before sheetrock
- Insulated patio door
- Vented soffits
- Lennox Pulse gas furnace
- 40-gallon, quick-recovery gas hot water heater
- Thermostatically-controlled attic fan

WANT TO MINIMIZE MAINTENANCE?

- Aluminum gutters and downspouts
- Fiberglas roof shingles
- Low maintenance vinyl siding
- Never-wax, one-piece vinyl flooring
- One-piece fiberglas bathtubs and shower stalls

Subject to errors, omissions and changes without notice

QUAIL HOLLOW

by  CHARLES SPUHLER INC.

ENHANCEMENTS TO YOUR SPUHLER HOME

● Two-car garage (Aldwych and Cromwell only)	3750
● Whirlpool jets in master bath	2500
● Fourth bedroom (in Cromwell only)	7500
● Wooded lot (where available) ... PHASE IV	5500
● Fireplace	3000
● Air conditioning	2325
● Self-cleaning range	275
● Over-the-range microwave oven	625
● Washer/dryer/refrigerator	1650
● Powder room vanity	350
● Basement (Aldwych)	9200
● Basement (Chesterfield)	10,200
● Basement (Cromwell)	8600
● Extended family room (8' x 14' — Aldwych only) ...	4800
● Extended concrete patio (where possible)	750
● Corner lot	2500
GAS LINE FOR DRYER (ROUGH STAGE)	275
GAS LINE FOR DRYER (AFTER ROUGH STAGE)	475

Prices subject to errors, omissions, and change without notice.

QUAIL HOLLOW

by  CHARLES SPUHLER INC.

8/3/87
Add \$2500 to
base price

ALDWYCH

3 bedroom rancher, 2 baths,
one-car garage, on slab 105,000

CROMWELL


3 bedroom 2-story, 2 $\frac{1}{2}$ baths,
one-car garage, on slab 118,000

CHESTERFIELD

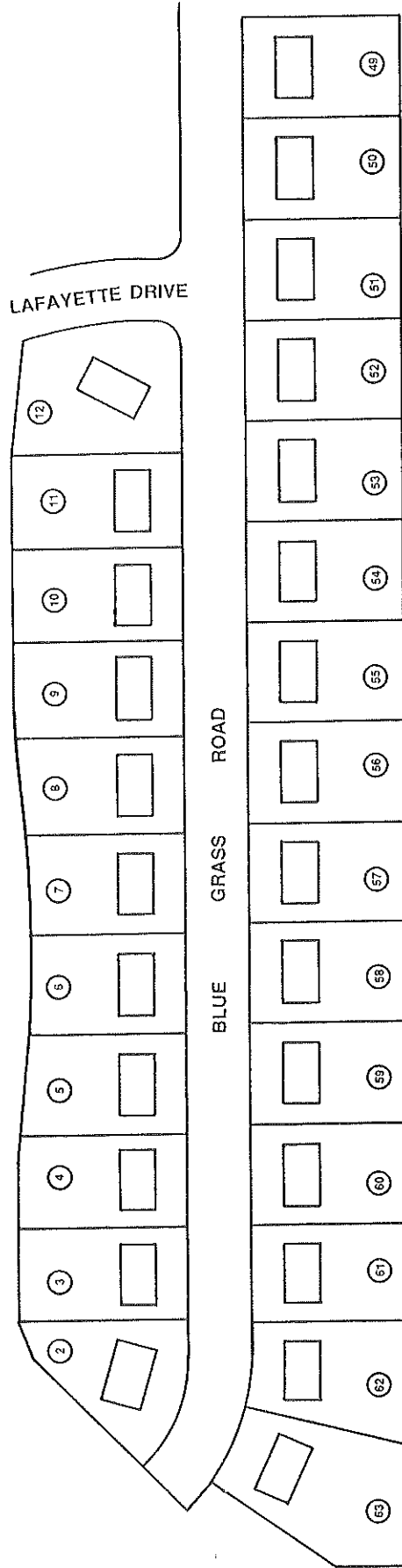
4 bedroom 2-story, 2 $\frac{1}{2}$ baths,
two-car garage, on slab 122,400

Prices subject to errors, omissions, and change without notice.

QUAIL HOLLOW

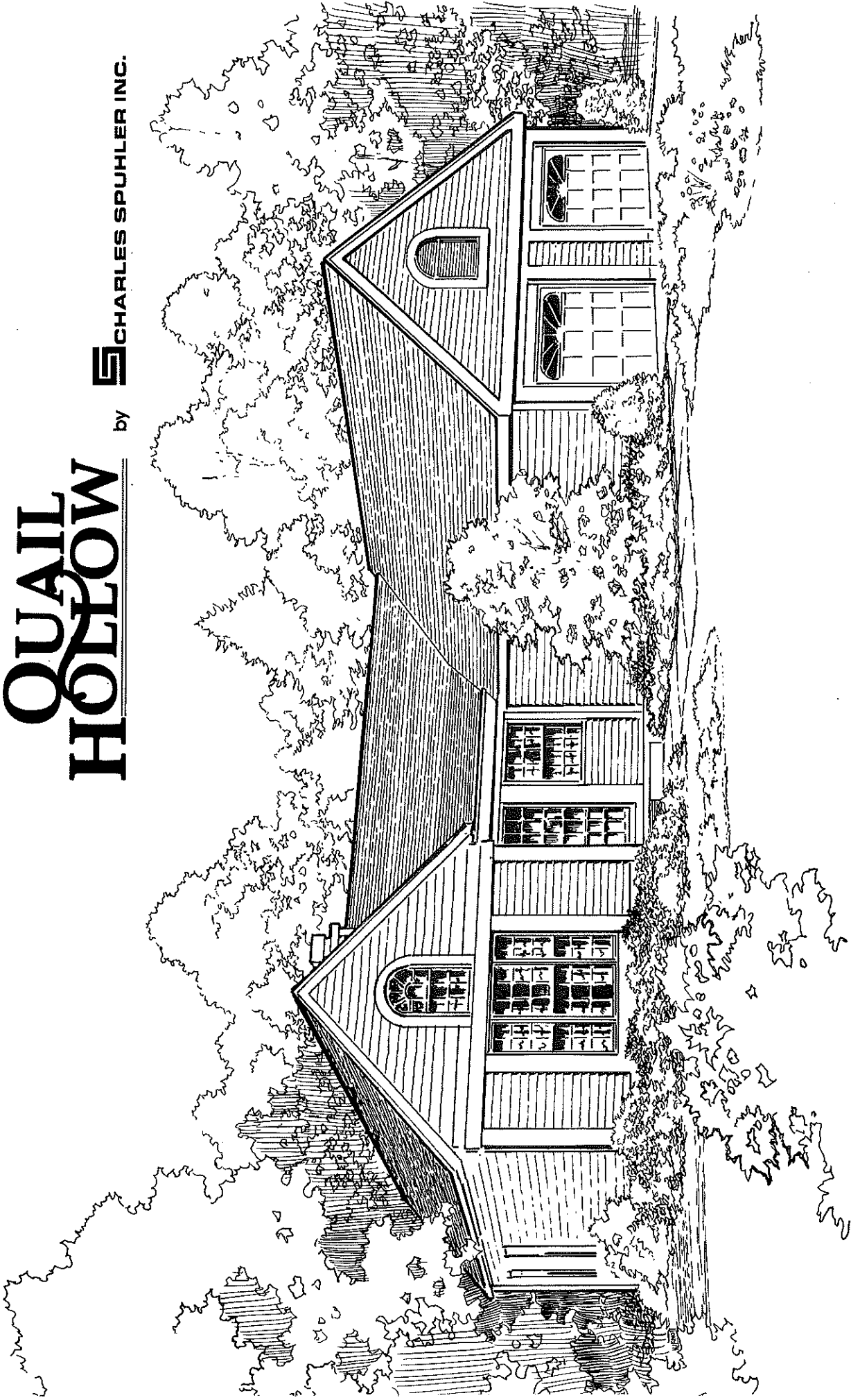
by  CHARLES SPUHLER INC.

BLOCK 13702

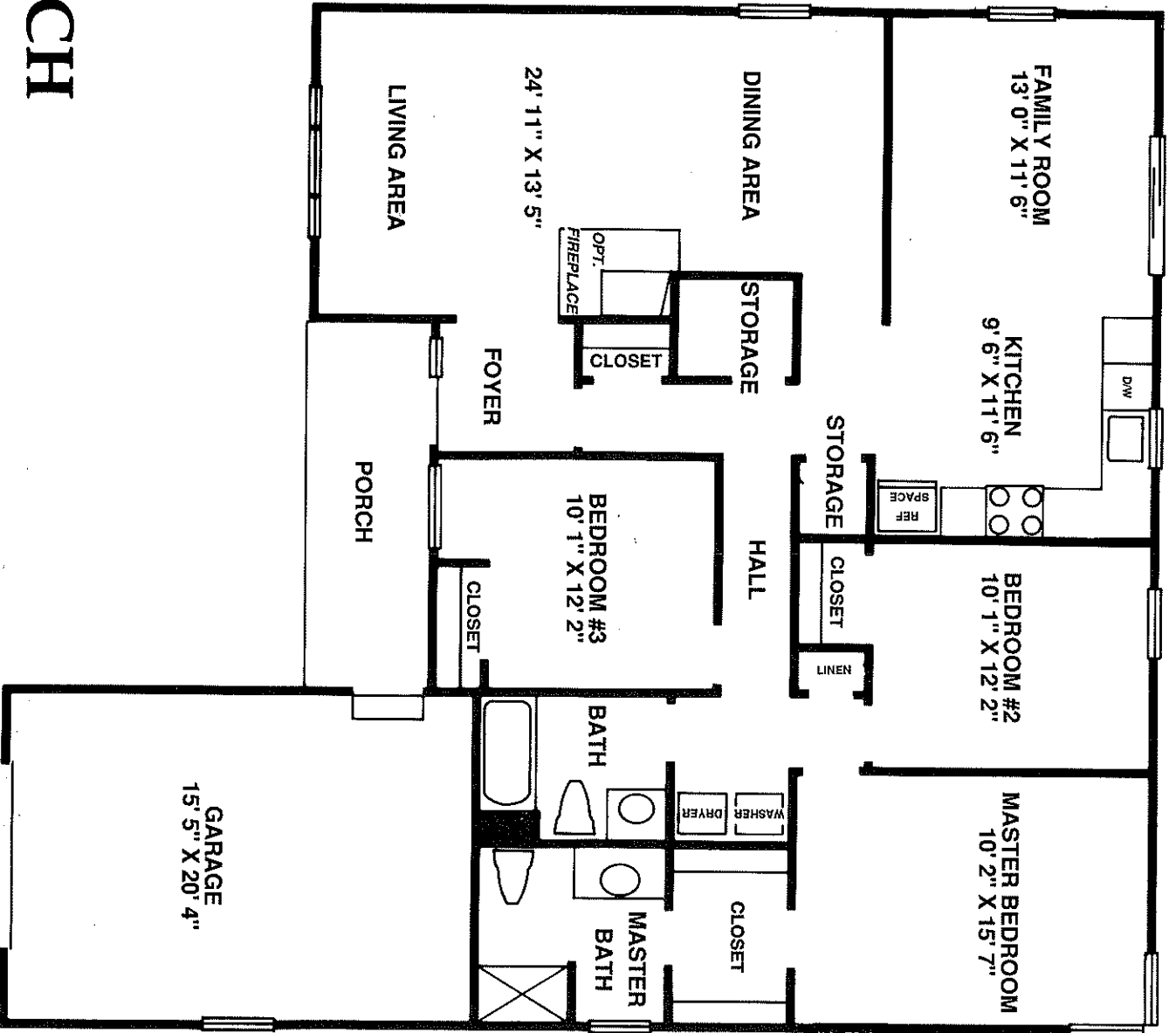


QUAIL HOLLOW

by  CHARLES SPUHLER INC.




THE ALDWYCH

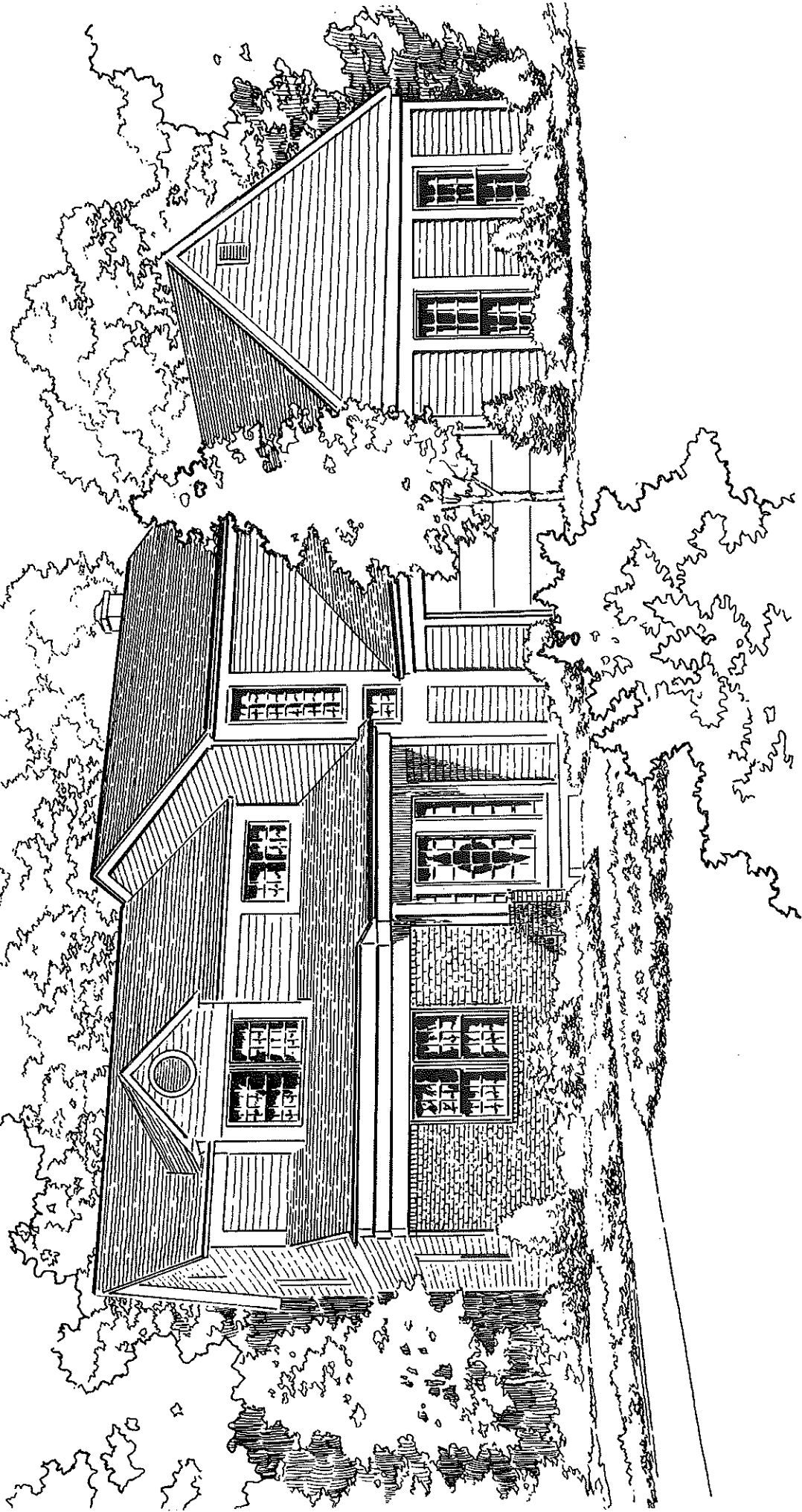


THE ALDWYCH

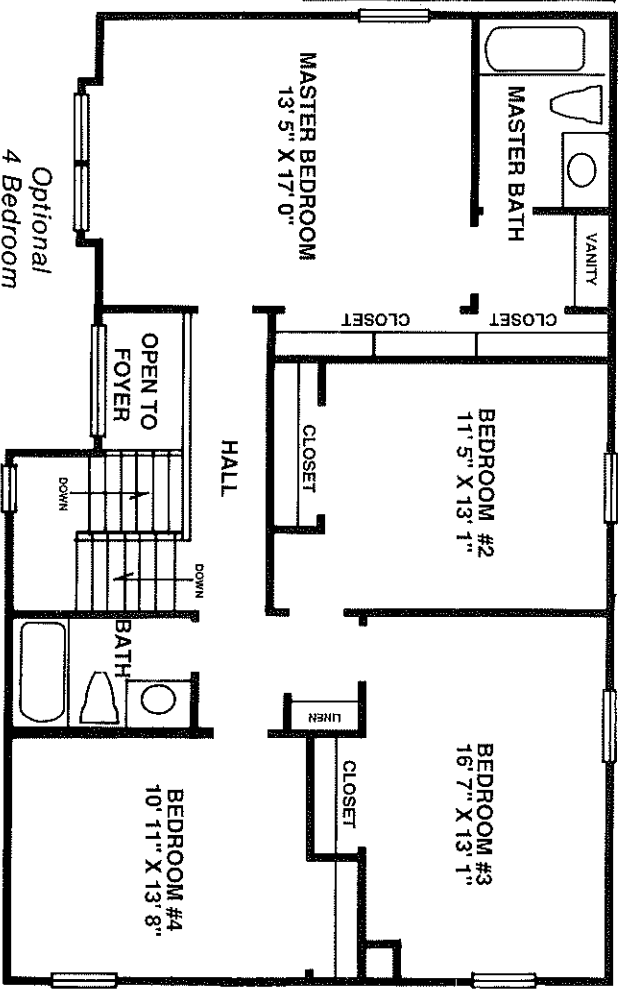
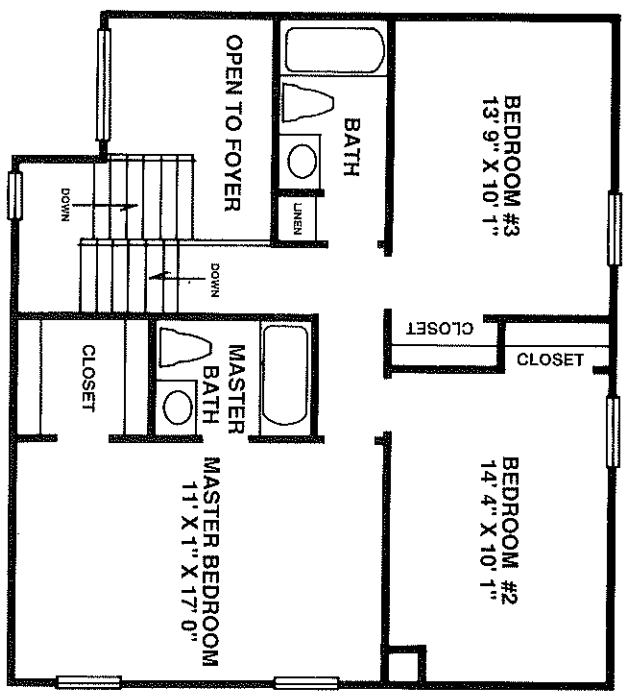
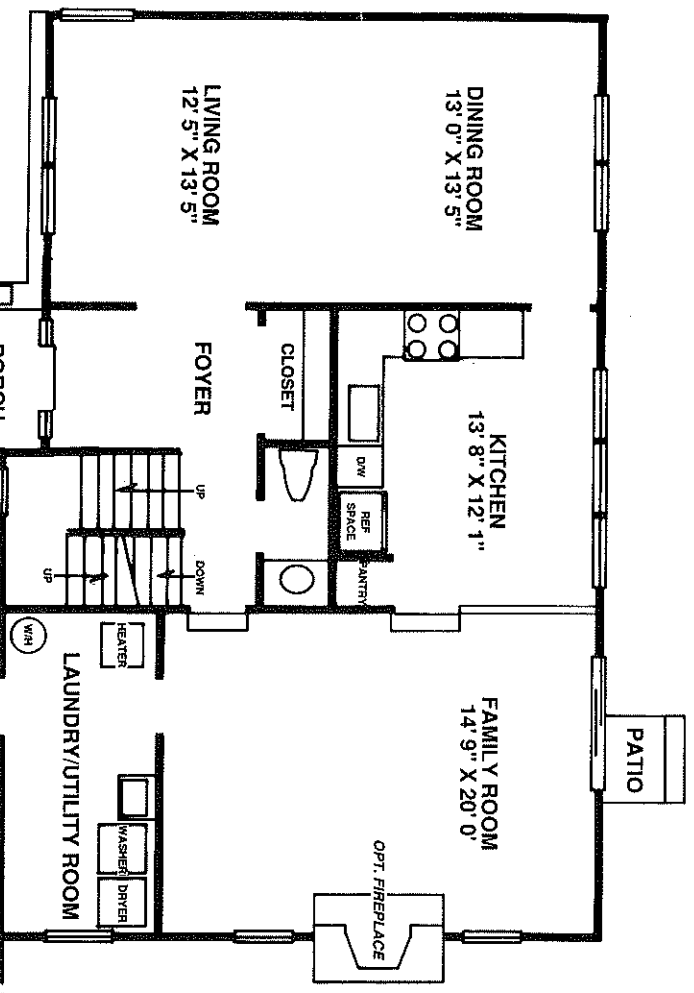
All room measurements
subject to field variations.

QUAIL HOLLOW

by  CHARLES SPUHLER INC.



THE CROMWELL



THE CROMWELL

All room measurements
subject to field variations.